

**A FRONT ELEVATION**  
 SCALE: 1/4" = 1'-0"      NORTHEAST

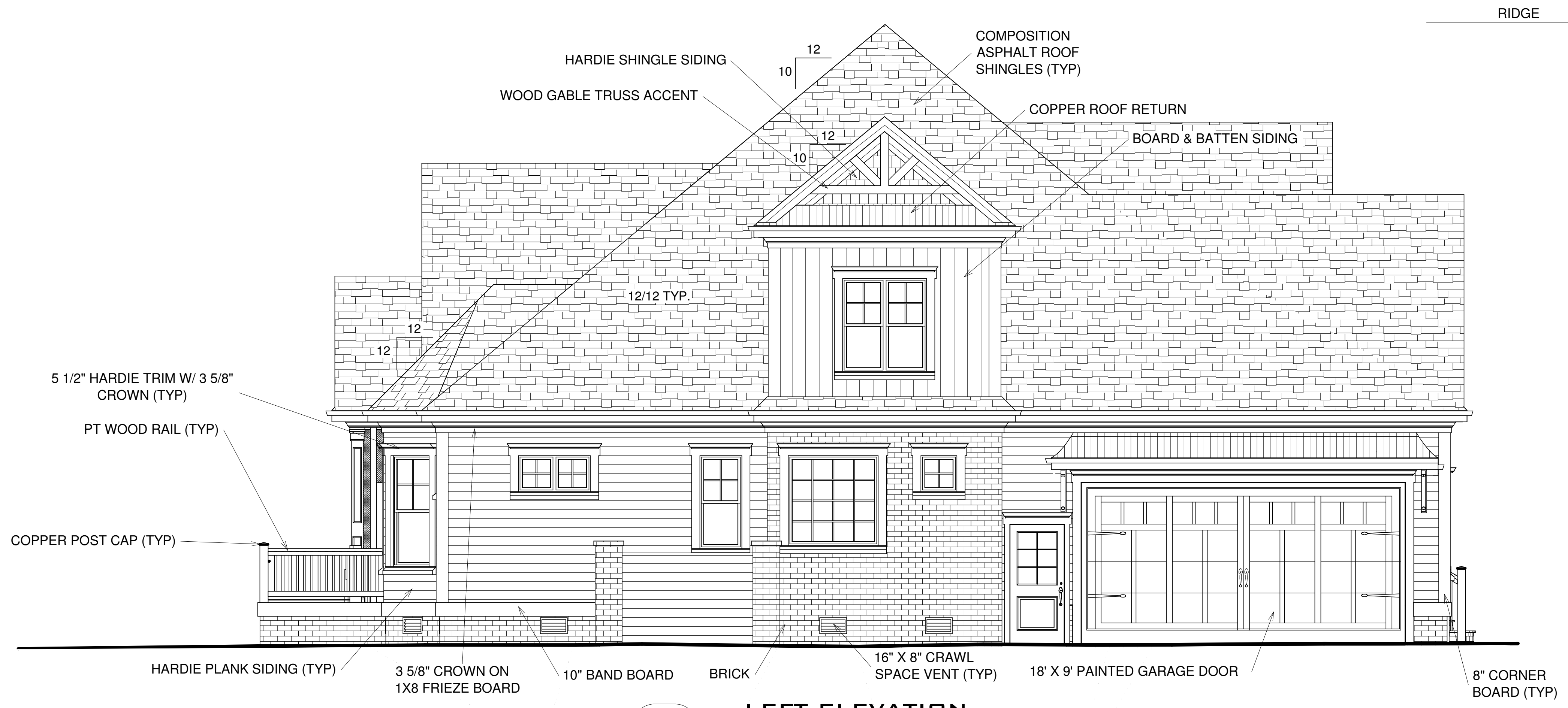
RIDGE +413 1/4" (34'-5 1/4") A.F.G.  
 +383 1/4" (31'-11 1/4) FROM +0"

UPPER FLOOR CEILING +243 5/8"

UPPER FLOOR +134 1/8"  
 MAIN FLOOR CEILING +121 1/2"  
 FROG FLOOR +115 5/8"  
 GARAGE CEILING +103"

MAIN FLOOR +0"      ELEV = +47'-6"

GRADE @ GARAGE DOORS -30"



**B LEFT ELEVATION**  
 SCALE: 1/4" = 1'-0"      SOUTHEAST

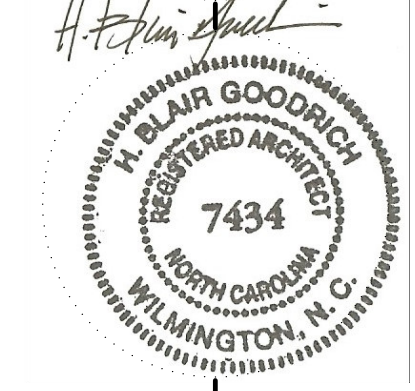
RIDGE +413 1/4" (34'-5 1/4") A.F.G.  
 +383 1/4" (31'-11 1/4) FROM +0"

UPPER FLOOR CEILING +243 5/8"

UPPER FLOOR +134 1/8"  
 MAIN FLOOR CEILING +121 1/2"  
 FROG FLOOR +115 5/8"  
 GARAGE CEILING +103"

MAIN FLOOR +0"      ELEV = +47'-6"

GRADE @ GARAGE DOORS -30"



DATE: 11 DECEMBER 2007

REVISION: